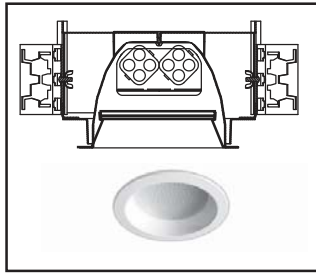
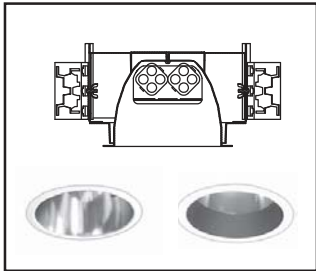


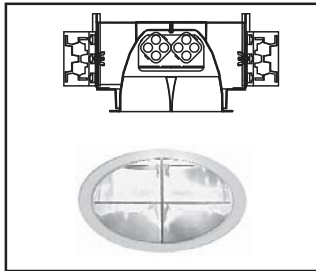
206HCFL-L



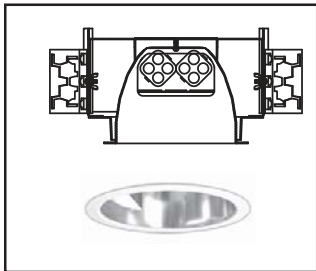
206HCFL-OB



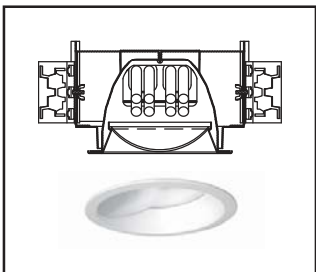
206HCFL-CB



206HCFL-WW



206HCFL-BLWW



### SPECIFICATIONS

**CONSTRUCTION** - Frame-in housing constructed of galvanized heavy gauge steel with adjustable yoke to retain reflector. Socket housing made of die formed galvanized steel.

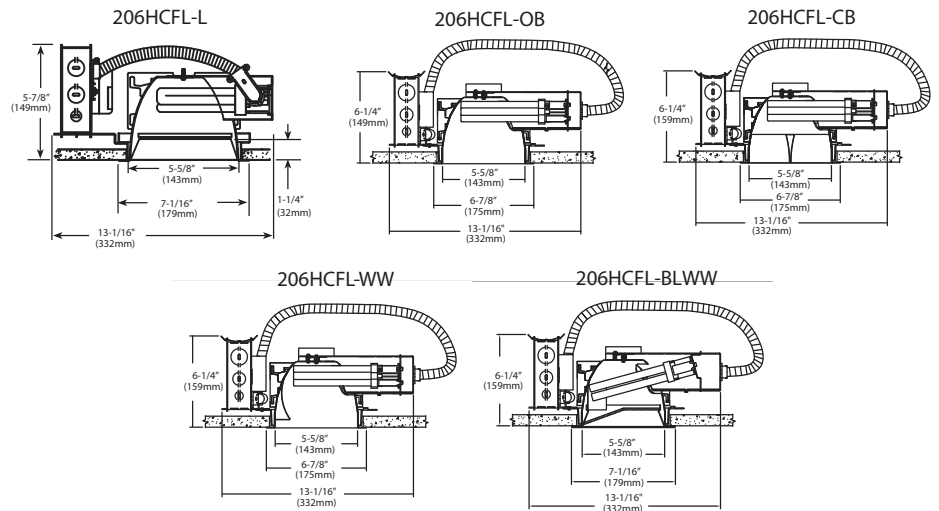
**ELECTRICAL** - Ballasts are Class P, solid state electronic, universal voltage (120V thru 277V) with end-of-life shutdown protection.

**MOUNTING** - Minimized overall housing dimensions simplify installation and access to junction box. Butterfly brackets accept 27" or 52" C-Channels, nailer bars or EMT conduit. Accommodates ceilings up to 2" thick.

**LISTING** - UL listed to U.S. and Canadian safety standards. Non-IC rated. Suitable for damp locations. Listed for use with thru wiring. IBEW Union made in the USA.

### PRODUCT HIGHLIGHTS:

- 206HCFL-L features a premium quality reflector with a white or clear semi-specular regressed splay and acrylic or glass insert lens. This version is listed for wet location, ceiling mount only.
- 206HCFL-OB features a premium quality open reflector with a variety of baffle options & decorative accessories.
- 206HCFL-CB features a premium quality open reflector with a vertical cross baffle.
- 206HCFL-WW features a premium quality open reflector with a semi specular wall wash insert.
- 206HCFL-BLWW features a premium quality reflector with a white or clear semi-specular regressed splay and acrylic linear spread lens.
- .050" spun aluminum reflector available in low-iridescent Alzak® or painted finishes. White self-trim flange.
- Horizontal orientation provides medium beam spread for even illumination and optimum cutoff.
- Computer-aided design optimizes visual comfort, efficiency and distribution.



ROUGH IN: 6-3/8" (162mm)

Alzak® is a registered trademark of the Aluminum Company of America.

Approved By: \_\_\_\_\_ Project Name: \_\_\_\_\_

Location: \_\_\_\_\_ Date: \_\_\_\_\_

P.O. Box 100519 | Fort Worth, TX 76185 | 800.633.8711 | Fax: 817.735.4824 | www.wslighting.com

**WLS LIGHTING SYSTEMS**

Consider the Impact!

# 206HCFL

6" HORIZONTAL  
RECESSED CANOPY  
SERIES

**ORDERING INFORMATION** SELECT APPROPRIATE CHOICE FROM EACH COLUMN TO FORMULATE ORDER CODE. Refer to example below.

SERIES	LAMP WATTAGE	LIGHT SOURCE	LINE VOLTAGE	REFLECTOR FINISH	OPTIONS	ACCESSORIES
<b>206HCFL-L</b> Lensed <b>206HCFL-OB</b> Open & Baffled <b>206HCFL-CB</b> Cross Baffled <b>206HCFL-WW</b> Wall Wash <b>206HCFL-BLWW</b> Bent Lensed Wall Wash	<b>13W Q or T</b> <sup>1</sup> <b>18W Q or T</b> <b>26W Q or T</b> <b>32W T</b> <b>42W T</b>  <b>13W Q or T</b> <sup>1</sup> <b>18W Q or T</b> <b>26W Q or T</b>	<b>CFL</b> - Compact Fluorescent  <b>CFL2</b> - Twin Compact Fluorescent	<b>UNIV</b> - Universal	<b>PALW</b> - Prismatic Acrylic Lens, White Splay <sup>2</sup> <b>PALC</b> - Prismatic Acrylic Lens, Clear Semi-specular Splay <sup>2</sup> <b>PGLW</b> - Prismatic Glass Lens, White Splay (C73 pattern) <sup>2</sup> <b>PGLC</b> - Prismatic Glass Lens, Clear Semi-specular Splay (C73 pattern) <sup>2</sup> <b>FGLW</b> - Fresnel Glass Lens, White Splay <sup>2</sup> <b>FGLC</b> - Fresnel Glass Lens, Clear Semi-specular Splay <sup>2</sup> <b>CGLW</b> - Clear Tempered Glass Lens, White Splay <sup>2</sup> <b>CGLC</b> - Clear Tempered Glass Lens, Clear Semi-specular Splay <sup>2</sup> <b>CL</b> - Clear Semi-specular <sup>3</sup> <b>CM</b> - Clear Matte <sup>4</sup> <b>GD</b> - Champagne Gold Semi-specular <sup>4</sup> <b>WH</b> - White <sup>4</sup> <b>PR</b> - Pewter Semi-specular <sup>4</sup> <b>WT</b> - Wheat Semi-specular <sup>4</sup> <b>BZ</b> - Bronze Semi-specular <sup>4</sup> <b>WW</b> - Single Wall Wash Type <sup>5</sup> <b>DWW</b> - Double Wall Wash Type <sup>5</sup> <b>WBLWW</b> - White Splay, Bent Lensed Wall Wash <sup>6</sup> <b>CBLWW</b> - Clear Semi-specular, Bent Lensed Wall Wash <sup>6</sup>	<b>DB</b> - Dimming Ballast <b>EB</b> - Emergency Battery Pack <b>EBHL</b> - Emergency Battery Pack High Lumen <b>FUS</b> - Fuse <b>347</b> - 347 Volt Operation <b>EB</b> - Emergency Indicator / Test Switch Mounting Hole (Use only with EB option) <b>NO</b> - No Options	<b>C27</b> - 27" Channel Bars (pair) <b>C52</b> - 52" Channel Bars (pair) <b>NB</b> - Nailor Bar Kit (set of 4) <b>SCIK</b> - Suspended Ceiling Installation Kit (set of 4 bars and 4 grid clips)

**206HCFL-L 13WQ**

(EXAMPLE ORDER)

**CFL**

**UNIV**

**PALW**

**NO**

**C27**

**ORDER:**

**WLS-206HCFL-**

**FOOTNOTES:**

- 1 - Not available with the 206HCFL-BLWW.
- 2 - Available only with the 206HCFL-L.
- 3 - Not available with the 206HCFL-L.
- 4 - Available only with the 206HCFL-OB and the 206HCFL-WW.
- 5 - Specify for the 206HCFL-WW only.
- 6 - Available only with the 206HCFL-BLWW.

Approved By: \_\_\_\_\_ Project Name: \_\_\_\_\_

Location: \_\_\_\_\_ Date: \_\_\_\_\_

**WLS** LIGHTING SYSTEMS

P.O. Box 100519 | Fort Worth, TX 76185 | 800.633.8711 | Fax: 817.735.4824 | www.wslighting.com

Consider the Impact!

01 Rev. 9/09