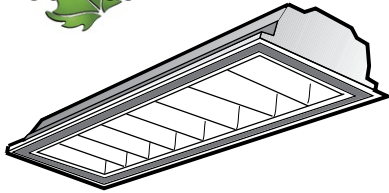
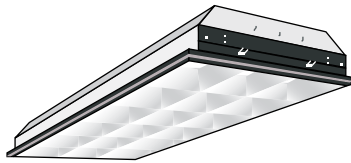


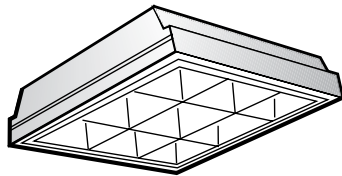
FLUORESCENT



1' X 4'



2' X 4'



2' X 2'



SPECIFICATIONS

HOUSING - Housing is die-formed and embossed code 22 gage steel. Finish is high reflectance baked white enamel, with black reveal support rails. Wiring knockouts are provided on back and end of housing. Ballast cover or reflector snaps into place; no tools required for ballast access. Louvers are formed from aluminum, are available in a variety of finishes and cell counts, and are held closed by two positive cam latches. Louvers hinge from either side and are field reversible. An access plate is provided to simplify installation.

REFLECTORS / DISTRIBUTION - Available with a reflector (M20 - Mirrored Reflector) or without a reflector (Blank). Premium, full specular reflectors are available as an option to increase efficiency or modify lighting distribution.

LAMP TYPE - Offered in seven different lamp types: T12, T8, T5, T5HO, T8 Ubend 6" leg, T8 Ubend 1.6" leg, and Biaxial (TT5) 2G11 4-Pin 40W.

SOCKETS - Equipped with a twist lock lampholder that ensures that the lamp is secured.

BALLASTS - Featuring a UL listed electronic ballast available in electronic 120V, electronic 277V, electronic 480V, electronic Multivolt (120 - 277), electronic Hi-Lume 120V, electronic Hi-Lume 277V, electronic Hi-Lume Multi-Volt, electronic Lo-Lume 120V, electronic Lo-Lume 277V, electronic Lo-Lume Multi-Volt, line dimming 120V, line dimming 277V, line or 0-10V dim Multi-Volt, magnetic 120V, and magnetic 277V. The ballast is thermally protected, class P, HPF, Non PCB. The ballast cover is held with a hinged steel door frame. Frame hinges downward on either side and is held closed by two positive cam latches.

MOUNTING - Recessed inverted T-Bar ceilings. Grid mount.

WARRANTY - 1 year manufacturers warranty on all components. 5 year warranty on ballast.

DIMENSIONS

Size	Width in/mm	Length in/mm	Depth in/mm
1' x 4'	11.75 / 300	48 / 1220	5.5 / 140
2' x 4'	23.75 / 600	48 / 1220	5.5 / 140
4' x 4'	23.75 / 600	24 / 610	5.5 / 140

Approved By: _____ Project Name: _____

Location: _____ Date: _____

P.O. Box 100519 | Fort Worth, TX 76185 | 800.633.8711 | Fax: 817.735.4824 | www.wslighting.com

WLS LIGHTING SYSTEMS

Consider the Impact!

PARA SERIES

PARABOLIC LENS TROFFER
FLUORESCENT GRID MOUNT

ORDERING INFORMATION SELECT APPROPRIATE CHOICE FROM EACH COLUMN TO FORMULATE ORDER CODE. Refer to example below.

SERIES	LAMP COUNT	LAMP SIZE	LAMP TYPE	DISTRIBUTION ²	CELL COUNT AND MATERIAL ¹	BALLAST & VOLTAGE	OPTIONS	ACCESSORIES
PARA	1 2	1' x 4'	T12 T8 T5 T5HO	BLANK - No Reflector M20 - Full specular reflector, Mirrored PFS - Premium Full Specular ¹	8C - 8 cell (1 x 8 pattern) semi-specular, 3" nom. 8F - 8 cell (1 x 8 pattern) Full specular, 3" nom. 8W - 8 cell (1 x 8 pattern) White, 3" nom.	E120 - Electronic, 120V E277 - Electronic, 277V E480 - Electronic, 480V MV - Electronic, Multi-Volt H120 - Electronic, 120V, Hi-Lume ³ H277 - Electronic, 277V, Hi-Lume ³ HMV - Electronic, Multi-Volt, Hi-Lume ³ L120 - Electronic, 120V Lo-Lume ³ L277 - Electronic, 277V Lo-Lume ³ LMV - Electronic, Multi-Volt Lo-Lume ³ G120 - Line Dimming 120V ⁴ G277 - Line Dimming 277V ⁴ M120 - Magnetic, 120V ⁵ M277 - Magnetic, 277V ⁵ DHB - Daylight Harvesting Ballast	RA - Regressed Aluminum Door, White RAB - Regressed Aluminum Door, Black WP - 6ft, 3 wire Whip WP10 - 6ft, 4 wire Whip EM - Emergency ballast, 500 lumens EM14 - Emergency ballast, 1400 lumens NO - No Option	EM - Emergency Ballast WP - Whip FK - Frame Kit NA - No Accessories
	2 3 4	2' x 4'	T12 T8 T5 T5HO		12C - 12 cell (3 x 6 pattern) semi-specular, 3" nom. 18C - 18 cell (3 x 6 pattern) semi-specular, 3" nom. 24C - 24 cell (4 x 6 pattern) semi-specular, 3" nom. 32C - 32 cell (4 x 8 pattern) semi-specular, 3" nom. 18F - 18 cell (3 x 6 pattern) Full specular, 3" nom. 32F - 32 cell (4 x 8 pattern) Full specular, 3" nom. 18W - 18 cell (3 x 6 pattern) White, 4" nom. 32W - 32 cell (4 x 8 pattern) White, 4" nom.			
	2 3 4	2' x 2'	T12 T8 T5 T5HO TB1 - Ubend 6" leg TB2 - Ubend 1.6" leg TT5 - Biaxial 2G11 4-Pin 40W		9C - 9 cell (3 x 3 pattern) semi-specular, 3" nom. 16C - 16 cell (4 x 4 pattern) semi-specular, 3" nom. 9F - 9 cell (3 x 3 pattern) Full specular, 3" nom. 16F - 16 cell (4 x 4 pattern) Full specular, 3" nom. 9W - 9 cell (3 x 3 pattern) White, 3" nom. 16W - 16 cell (4 x 4 pattern) White, 3" nom.			

PARA 2 1'x4' T8 M20 8C E120 NO NA
(EXAMPLE ORDER)

ORDER:
WLS-PARA _____

FOOTNOTES:

- 1 - Custom louvers available in any cell configuration. Contact factory for additional information.
- 2 - Custom reflectors available to create any light distribution.
- 3 - Hi-Lume and Lo-Lume ballasts available for T8 lamp only.
- 4 - Line dimming ballasts available for T8 and T5HO only.
- 5 - Magnetic ballasts available for t8 lamps only.

Approved By: _____ Project Name: _____

Location: _____ Date: _____

WLS LIGHTING SYSTEMS