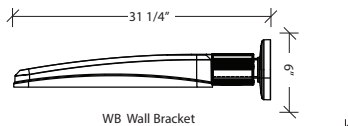
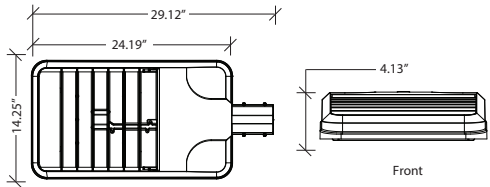
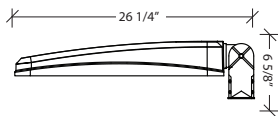
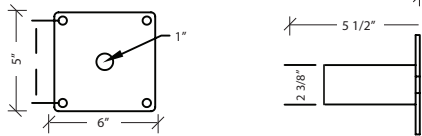




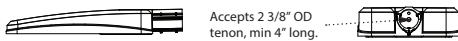
## DIMENSIONS



WB Wall Bracket



PK2 2-3/8" Adjustable Knuckle



Side View

SF2 2-3/8" OD Slip Fitter

Back View

Accepts 2 3/8" OD tenon, min 4" long.



Side View

RA Rectangular Arm

Back View

## SPECIFICATIONS

**INTENDED USE** - The upper reflector is lightweight aluminum composite. The reflector shall be finished in a white, fluoropolymer finish. The reflector shall be attached to the cast aluminum pivot joints and secured with four stainless steel bolts, two cast aluminum, adjustable knuckles shall connect the the reflector assembly to the vertical, stainless steel struts. The struts are #304 stainless steel minimum .250" wall thickness. The struts shall have threaded connections for attachment to the upper reflector amd lamp module.

## CONSTRUCTION

- One piece optical cartridge system consisting of an LED engine, LED lamps, optics, gasket and stainless steel bezel.
- Cartridge is held together with internal brass standoffs soldered to the board so that it can be field replaced as a one piece optical system.
- Two-piece silicone and micro-cellular polyurethane foam gasket ensures a weather-proof seal around each individual LED.

## LED / OPTICS

- LED driver accepts 100V through 277V, 50 Hz to 60 Hz (UNIV), or a driver that accepts 347V or 480V input.
- Power factor is .92 at full load.
- All electrical components are rated at 50,000 hours at full load and 25°C ambient conditions per MIL- 217F Notice 2.
- Dimming drivers are standard with connections for external dimming equipment available upon request.
- Component-to-component wiring within the luminaire may carry no more than 80% of rated load and is listed by UL for use at 600VAC at 50°C or higher.
- Plug disconnects are listed by UL for use at 600 VAC, 13A or higher. 13A rating applies to primary (AC) side only.

## FINISH

- Polyester powder-coat electrostatically applied and thermos cured.
- Finish consists of a five stage pretreatment regimen with a polymer primer sealer and top coated with a thermoset super TGIC polyester powder coat finish.
- The finish meets the AAMA 605.2 performance specification which includes passing a 3000 hour salt spray test for corrosion resistance and resists cracking or loss of adhesion per ASTM D522 and resists surface impacts of up to 160 inch-pounds.

## ELECTRICAL

- Fixture electrical compartment shall contain all LED driver components and shall be provided with a push-button terminal block for AC power connections.
- The housing is designed for an optional 7-pin twist-lock photo control receptacle.

**CONTROLS** - Available with full dimming and wireless controls, please comctact you WLS Representative for more details.

**LISTINGS** - The luminaire shall be NRTL certified to UL 1598 and 8750 standards for use in wet locations.

**WARRANTY** - 5 year limited warranty. Contact you WLS Representative for more information.

Approved By: \_\_\_\_\_ Project Name: \_\_\_\_\_

Location: \_\_\_\_\_ Date: \_\_\_\_\_

# RPVL LED SITE / AREA LIGHT SERIES

**ORDERING INFORMATION** SELECT APPROPRIATE CHOICE FROM EACH COLUMN TO FORMULATE ORDER CODE. Refer to example below.

SERIES	ENGINE	COLOR TEMP.	OPTICS <sup>5</sup>	VOLTAGE	FINISH	OPTIONS / ACCESSORIES	MOUNTING OPTIONS
RPVL	<b>643</b> - 64 LED array, 135 watt	<b>3K</b> - 3000K	<b>T1</b> - Type I	<b>UNV</b> - 120-277V	<b>BBK</b> - Basic black, textured	Shield	<b>RA</b> - Rectangular arm <b>SF2</b> - 2-3/8" OD slip-fitter <b>SF2</b> - 2-3/8" adjustable knuckle <b>WB</b> - Wall bracket
	<b>649</b> - 64 LED array, 190 watt	<b>4K</b> - 4000K	<b>T2</b> - Type II	<b>347</b> - 347V	<b>MBK</b> - Matte black, textured	<b>HS9</b> - House side shield, 90	
	<b>808</b> - 80 LED array, 180 watt	<b>5K</b> - 5000K	<b>T3</b> - Type III	<b>480</b> - 480V	<b>WHT</b> - White, textured	<b>HS18</b> - House side shield, 180	
	<b>803</b> - 80 LED array, 235 watt		<b>T4</b> - Type IV		<b>MBT</b> - Metallic bronze, textured	<b>BLC</b> - Back light <sup>4</sup> shield	
	<b>962</b> - 96 LED array, 220 watt		<b>T5</b> - Type V, medium		<b>BZT</b> - Bronze, textured	Sensor	
	<b>968</b> - 96 LED array, 280 watt		<b>T5R</b> - Type V, rectangular		<b>DBT</b> - Dark bronze, textured	<b>OSC</b> - Occupancy sensor (on/off)	
			<b>T5W</b> - Type V, wide		<b>GYS</b> - Gray, smooth	<b>MDD</b> - Motion dimming detector	
		<b>FRA</b> - Front row auto optic		<b>DPS</b> - Dark platinum, smooth	Electrical		
				<b>GNT</b> - Green, textured	<b>PCT</b> - Photocell, twist lock		
				<b>MST</b> - Metallic silver, textured	<b>PCS</b> - Photocell, shorting cap		
				<b>MTT</b> - Metallic titanium, textured	<b>2DF</b> - Dual power <sup>1,2</sup> feed		
				<b>OWI</b> - Old world iron			
				<b>RAL</b> - _____			

**RPVL**  
(EXAMPLE ORDER)

**968**

**4K**

**T5R**

**UNV**

**MST**

**HS9**

**ORDER:**  
**WLS RPVL**

**FOOTNOTES:**

- 1 - Not available with 643.
- 2 - Not available @ 347V or 480V input
- 3 - DesignLights Consortium Qualified. Refer to [www.designlights.org](http://www.designlights.org) qualified products list under family models for details
- 4 - T4 optic only
- 5 - To rotate optics left or right 90 degrees, specify L or R after the optical distribution (example: T4L)

Approved By: \_\_\_\_\_ Project Name: \_\_\_\_\_

Location: \_\_\_\_\_ Date: \_\_\_\_\_



1919 Windsor Place ■ Fort Worth, TX 76110 ■ 800.633.8711 ■ Fax: 817.735.4824 ■ [www.wslighting.com](http://www.wslighting.com)

Consider the Impact!