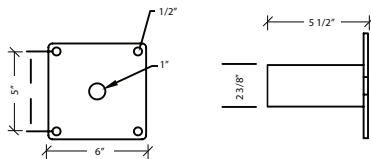
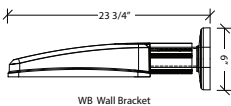
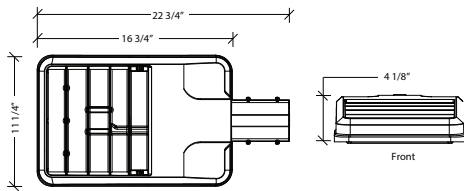




## DIMENSIONS



## SPECIFICATIONS

**CONSTRUCTION** - The RVP monolithic housing design creates over 4.5 square feet (small RVP) or 7.7 square feet (large RVP) of heat-sinking surface area. Vertical fins, combined with flow-thru openings prevent sediment and moisture buildup on critical heat sinking surfaces without the need for grates, screens or other debris control tactics. The Viper housing, electrical compartment and fitter are made from die cast aluminum that is pre-treated and powder-coated to meet the most rugged industry standards. The Drivers are mounted on a removable door that is secured with keyslotted screws and hinges down for convenient access. The drivers are field replaceable using quick disconnects.

**ELECTRICAL** - Thermal circuit shall protect the luminaire from excessive temperature by interfacing with the 0-10V dimmable drivers to reduce drive current as necessary. The factory preset temperature limits shall be designed to ensure maximum hours of operation to assure L70 rated lumen maintenance. The device shall activate at a specific, factory-preset temperature, and progressively reduce power over a finite temperature range.

Power factor is .92 at full load. All electrical components are rated at 50,000 hours at full load and 25°C ambient conditions per MIL- 217F Notice 2. Dimming drivers are standard, with connections for external dimming equipment available upon request. Component-to-component wiring within the luminaire may carry no more than 80% of rated load

Device shall be able to co-exist with other 0-10V control devices (occupancy sensors, external dimmers, etc.). The device will effectively control the solder point temperature as needed; otherwise it will allow the other control device(s) to function unimpeded.

**SURGE PROTECTOR** - The on-board surge protector shall be a UL recognized component for the United States and Canada and have a surge current rating of 20,000 Amps. The LSP shall have a clamping voltage of 825V and surge rating of 540J. The case shall be a high-temperature, flame resistant plastic enclosure.

**OPERATING ENVIRONMENT** - Shall be able to operate normally in ambient temperatures from -40°C to 40°C

**OPTICS** - Each RPV luminaire is supplied with an one piece optical cartridge system consisting of an LED engine, LED lamps, optics, gasket and stainless steel bezel. The cartridge is held together with internal brass standoffs soldered to the board so that it can be field replaced as a one piece optical system. Two-piece silicone and micro-cellular polyurethane foam gasket ensures a weather-proof seal around each individual LED.

**FINISH** - Polyester powder-coat electrostatically applied and thermos cured. Finish consists of a five stage pretreatment regimen with a polymer primer sealer and top coated with a thermoset super TGIC polyester powder coat finish. The finish meets the AAMA 605.2 performance specification which includes passing a 3000 hour salt spray test for corrosion resistance and resists cracking or loss of adhesion per ASTM D522 and resists surface impacts of up to 160 inch-pounds.

**CONTROLS** - Available with full dimming and wireless controls, please contact you WLS Representative for more details.

**CERTIFICATIONS** - The luminaire shall bear a CSA label and be marked suitable for wet locations. Luminaire approved by the International Dark-Sky association as a dark sky friendly fixture.

**WARRANTY** - 5 year limited warranty. Contact you WLS Representative for more information.

Approved By: \_\_\_\_\_ Project Name: \_\_\_\_\_

Location: \_\_\_\_\_ Date: \_\_\_\_\_

# RPVS LED SITE / AREA LIGHT SERIES

**ORDERING INFORMATION** SELECT APPROPRIATE CHOICE FROM EACH COLUMN TO FORMULATE ORDER CODE. Refer to example below.

SERIES	ENGINE	COLOR TEMP.	OPTICS <sup>4</sup>	VOLTAGE	FINISH	OPTIONS / ACCESSORIES	MOUNTING OPTIONS
<b>RPVS</b>	<b>225</b> - 22 LED array, 50 watt	<b>3K</b> - 3000K <b>4K</b> - 4000K <b>5K</b> - 5000K	<b>T1</b> - Type I <b>T2</b> - Type II <b>T3</b> - Type III <b>T4</b> - Type IV <b>T5</b> - Type V, medium <b>T5R</b> - Type V, rectangular <b>T5W</b> - Type V, round wide <b>FRA</b> - Front row auto optic	<b>UNV</b> - 120-277V <b>347</b> - 347V <b>480</b> - 480V	<b>BBK</b> - Basic black, textured <b>MBK</b> - Matte black, textured <b>WHT</b> - White, textured <b>MBT</b> - Metallic bronze, textured <b>BZT</b> - Bronze, textured <b>DBT</b> - Dark bronze, textured <b>GYS</b> - Gray, smooth <b>DPS</b> - Dark platinum, smooth <b>GNT</b> - Green, textured <b>MST</b> - Metallic silver, textured <b>MTT</b> - Metallic titanium, textured <b>OWI</b> - Old world iron <b>RAL</b> - _____	Shield  <b>HS9</b> - House side shield, 90° <b>HS18</b> - House side shield, 180° <b>BLC</b> - Back light <sup>3</sup> shield  Sensor  <b>OSC</b> - Occupancy sensor (on/off) <b>MDD</b> - Motion dimming detector  Electrical  <b>PCT</b> - Photocell, twist lock <b>PCS</b> - Photocell, shorting cap <b>2DF</b> - Dual power <sup>1</sup> feed	<b>RA</b> - Rectangular arm <b>SF2</b> - 2-3/8" OD slip-fitter <b>SF2</b> - 2-3/8" adjustable knuckle <b>WB</b> - Wall bracket
	<b>227</b> - 22 LED array, 70 watt						
	<b>307</b> - 30 LED array, 70 watt						
	<b>309</b> - 30 LED array, 90 watt						

**RPVS**  
(EXAMPLE ORDER)

**225**

**4K**

**T5R**

**UNV**

**MST**

**HS9**

**ORDER:**  
**WLS RPVS**

**FOOTNOTES:**

- 1 - Not available @ 347V or 480V input
- 2 - DesignLights Consortium Qualified. Refer to [www.designlights.org](http://www.designlights.org) qualified products list under family models for details
- 3 - T4 optic only
- 4 - To rotate optics left or right 90 degrees, specify L or R after the optical distribution (example: T4L)

Approved By: \_\_\_\_\_ Project Name: \_\_\_\_\_

Location: \_\_\_\_\_ Date: \_\_\_\_\_



1919 Windsor Place | Fort Worth, TX 76110 | 800.633.8711 | Fax: 817.735.4824 | [www.wslighting.com](http://www.wslighting.com)

Consider the Impact!