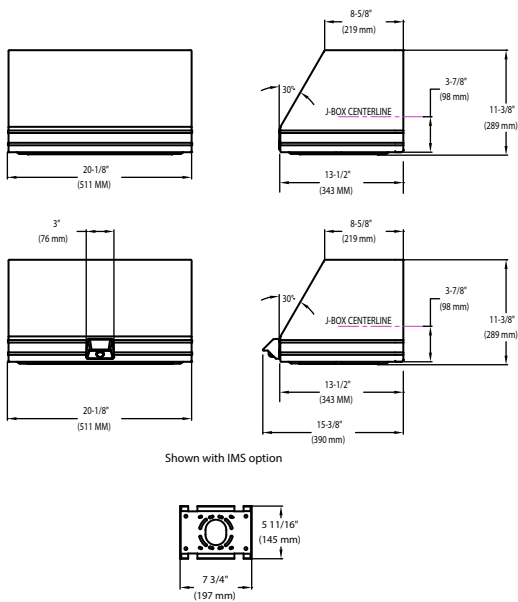


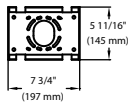


Shown with optional decal striping

DIMENSIONS



Shown with IMS option



Universal Mounting Plate

IP67



Intertek
Suitable for wet locations



SPECIFICATIONS

HOUSING - The aerodynamic aluminum housing is a rectangular shape. All mounting hardware is stainless steel or electro-zinc plated steel. Housing and optical unit are sealed with extruded silicone gasket; supply conductors with molded EPDM bushing.

LEDs - Available with 28 or 48 select high-brightness LEDs in Cool White (5300° K nominal) or Neutral White (4200° K nominal) color temperature, 70 CRI (nominal).

OPTICAL UNIT - Clear tempered optical-grade flat lens sealed to the aluminum optic housing created an IP67 rated unit. Pressure stabilizing breather allows super-tight protection while preventing cycling from building up internal pressures and vacuums that can stress optical unit seals.

OPTICS / DISTRIBUTION - Ultra-high efficiency reflectors provide three distributions. Choose from Wide Throw (WT), Forward Throw (FP) or Wall Wash (WW).

DRIVER - Available in 350mA and 450mA drive currents (Drive currents are factory programmed). Components are fully encased in potting material for IP65 moisture resistance. Driver complies with IEC and FCC standards. Driver can be easily accessed and removed.

ELECTRICAL - Two-stage surge protection (including separate surge protection built into electronic driver) meets IEEE C62.41.2-2002, Scenario 1, Location Category C. Available with universal voltage power supply 120-277VAC (50/60Hz input) or 347-480VAC.

OPERATING TEMPERATURE - -40° C to +50° C (-40° F to +122° F)

FINISH - Fixtures are finished with WLS DuraGrip® polyester powder coat finishing process. The DuraGrip® finish withstands extreme weather changes without cracking or peeling, and is guaranteed for five full years. Standard colors include bronze, black, platinum plus, white, satin verde green, graphite, and metallic silver. Custom colors available upon request.

OPTIONAL INTEGRAL MOTION SENSOR - Passive infrared motion sensor activates switching of luminaire light levels. High level light is activated when passersby enter the target zone and increased to full-bright in 1-2 seconds. Low light level (30% of maximum drive current) is activated when target zone is absent of motion activity for 5 minutes and is gradually ramped down (10 seconds) to low level. Sensor detection range 110° horizontal x 93° vertical x 10 meters maximum distance.

EMERGENCY OPTIONS - Integral emergency battery-back-up options are available. BB option operates in 0° C to 60° C ambient temperature and CWBB operates in -20° C to 60° C ambient temperature. When primary AC power failure occurs, both options operate 10 LEDs for minimum of 90 minutes.

WARRANTY - WLS LED fixtures carry a limited 5-year warranty.

LISTINGS - ETL listed ANSI/UL 1598. UL8750 and other U.S. and international safety standards. Suitable for wet locations in downlight position.

SHIPPING WEIGHT (in carton) - 31 lbs./14Kg

Approved By: _____ Project Name: _____

Location: _____ Date: _____

1919 Windsor Place ■ Fort Worth, TX 76110 ■ 800.633.8711 ■ Fax: 817.735.4824 ■ www.wslighting.com



Consider the Impact!

WMEL LED WALL MOUNT SERIES

ORDERING INFORMATION SELECT APPROPRIATE CHOICE FROM EACH COLUMN TO FORMULATE ORDER CODE. Refer to example below.

SERIES	DISTRIBUTION	# OF LEDs	LIGHT SOURCE	DRIVE CURRENT	COLOR TEMPERATURE	LINE VOLTAGE	LUMINAIRE FINISH	OPTIONS	ACCESSORIES
WMEL	WT - Wide Throw FP - Forward Throw WW - Wall Wash	28 48	LED	350 - 350mA 450 - 450mA	CW - Cool White NW - Neutral White	UE - Universal Voltage (120-277) 347 - 480	BRZ - Bronze BLK - Black PLT - Platinum Plus WHT - White SVG - Satin Verde Green GPT - Graphite MSV - Metallic Silver CC - Custom Color	BB - Battery Back-up ¹ CWBB - Cold Weather Battery Back-up ¹ IMS - Integral Motion Sensor PC - Photocell PMA - Pole Mount adapter for use with Square Pole (for single or D180 mounting configuration only) ² PMAR - Pole Mount adapter for use with Round Pole (for single or D180 mounting configuration only) ² TP - Tamper Proof ³ NO - No Options	PS - Polycarbonate Shield SW - Surface Wiring Box SF - Single Fusing DF - Double Fusing NA - No Accessories

WMEL WT 48 LED 450 CW UE BRZ NO NA

(EXAMPLE ORDER)

ORDER: WLS-WMEL _____

FOOTNOTES:

- 1- Available with UE voltage only.
- 2- Designed with 3" reduced drilling pattern. For S or D180 mounting configuration only.
- 3- Tamper-proof Screwdriver must be ordered separately. (See Accessories Ordering Information.)

LIGHT OUTPUT - WMEL						
		Distribution/Lumens (Nominal)				
Milliamps	# of LEDs	Type FT	Type WT	Type WW	Watts	
Cool White	350 mA	28	2876	2902	3032	34
		48	4855	4931	5038	55
	450 mA	28	3522	3542	3720	44
		48	5900	5972	6115	72
Neutral White	350 mA	28	2787	2792	2898	34
		48	4553	4660	4555	55
	450 mA	28	3377	3369	3517	44
		48	5453	5562	5452	72

LED Chips are frequently updated therefore values may increase.

Approved By: _____ Project Name: _____

Location: _____ Date: _____

1919 Windsor Place ■ Fort Worth, TX 76110 ■ 800.633.8711 ■ Fax: 817.735.4824 ■ www.wslighting.com

WLS LIGHTING SYSTEMS

Consider the Impact!