

# SYSTEM OVERVIEW

**netLiNK™ Controls** is a revolutionary two-way Wireless Controller and Remote Monitoring System. The system is designed to remotely control and monitor site lighting and has the capability to control 0-10V LED Dimming features.

## THE COMPONENTS

---

The system consists of a Base Station and 1 to 500 wireless node switches. Users can dramatically reduce their electrical consumption and costs by precisely controlling on/off times of individual devices or groups of devices without rewiring the electrical circuits.

Each wireless node can be configured with up to four channels of control and monitoring. This gives each base station the ability to control up to 2000 individual control points.

With 120-480 VAC power to each node, netLiNK can take control of the electrical system without running any new circuits.



Wireless Nodes and Base Station (right)



Wireless node atop three-fixture pole with motion sensors.

## THE COMMUNICATIONS

---

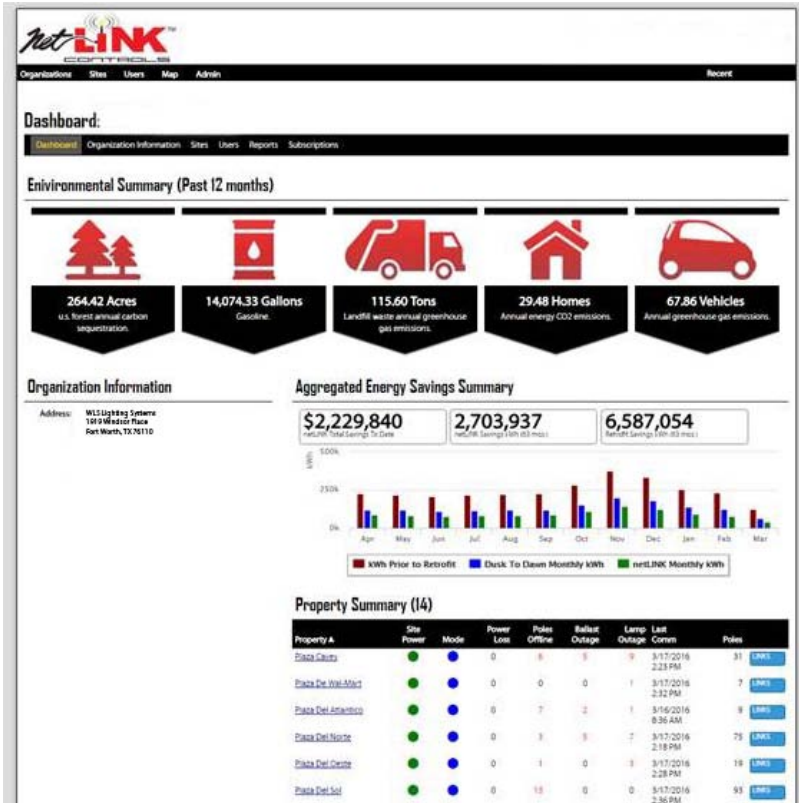
The netLiNK base station sends and receives commands via a secure cellular connection between the cloud-based server and wireless nodes.

The commands are distributed wirelessly to the node switches throughout the property and a secure 900 MHz mesh network.

netLiNK monitors the electrical current of each fixture and notifies the designated party of any abnormal event, being fixture failure or power loss. This decreases the downtime and provides critical information about the lighting system immediately, or on a scheduled basis, to managers and owners.

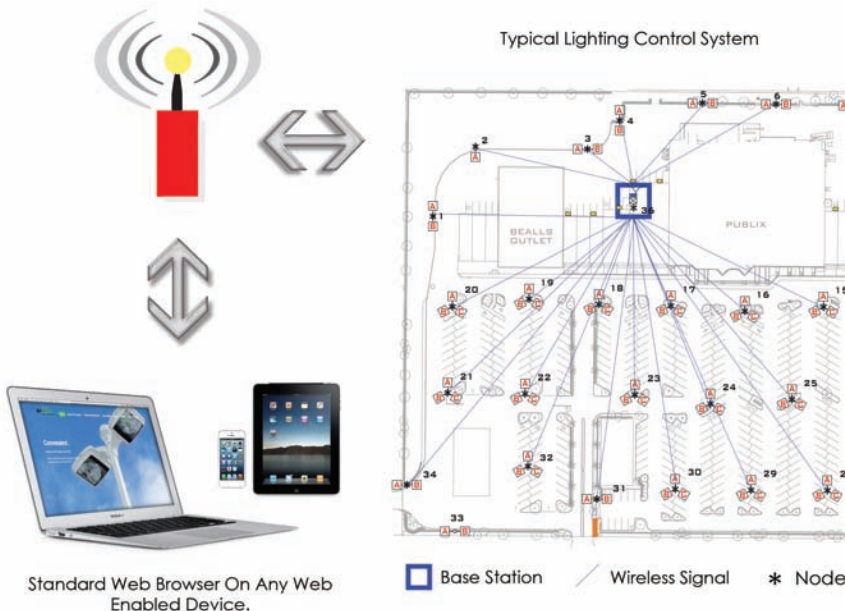
*Combined, the components and two-way communication gives unrivaled control over energy consumption and fixture maintenance to YOU!*

# NETLINK SYSTEM



netLINK Website Portal

https: Secure Web Access (SSL)



## Features of netLINK

- Connect to Datacenter from anywhere!
- Historical data and energy consumption reports.
- Photocell override for inclement weather.
- 0-10V Dimming Options.
- Individual fixture or multi-zone/group control.
- Continuous System Monitoring (CSM).
- 24/7 365-day Support via internet, email, phone, or fax.

## Benefits of netLINK

- LED Compatible with 0-10V dimming and motion sensor options.
- Extended fixture life.
- Reduce energy consumption in non-peak hours.
- Alert notifications of lamp/ballast outage.
- Central command of all site lighting for entire property portfolios.
- Retrofits into existing electrical systems.
- Tenant retention with improved light levels and maintenance.
- Reduces operating costs, boosting ROI.
- Typical ROI <18 months.

## Approvals

FCC Part 15, cETLus, IDA

