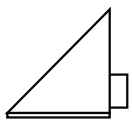
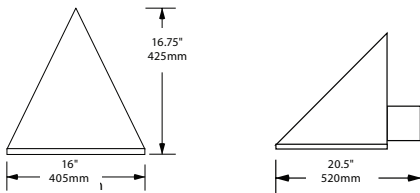
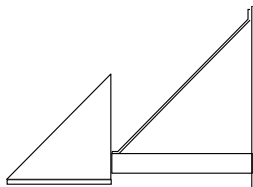




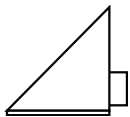
## DIMENSIONS



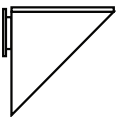
MTRP



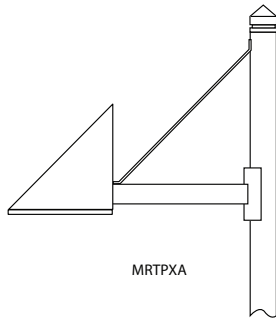
MRTWDXA



MRTD



M2WU



MRTPXA

Weight: 32 lbs

## SPECIFICATIONS

**HOUSING** - All housing and mounting components shall be cast aluminum 356 alloy and sealed with continuous silicone rubber gaskets. Internal and external hardware is stainless steel. While standard configurations do not require a flat lens, optional lenses shall be tempered glass. The optical bezel finish will match the luminaire housing. Easy accessing through lens frame which swings down, with driver and surge suppressor mounted to a prewired tray for quick disconnects

**OPTICS** - LED modules are independently aimed in both horizontal rotation and vertical tilt angle. LED's are mounted to a metal printed circuit board assembly with uniform conformal coating over the panel surface and electrical features. With clear injection molded PMMA acrylic optics and sealed to a die-cast anodized aluminum heat sink with an injection molded silicone rubber gasket. IP66.

**ELECTRICAL** - Luminaires have integral surge protection that is U.L. recognized and have a surge current rating of 10,000 Amps using the industry standard 8/20uSec wave and surge rating of 372J. Drivers are U.L. recognized with an inrush current maximum of <20.0 Amps maximum at 230VAC, and not be compatible with current sourcing dimmers, consult WLS for current list of known compatible dimming systems, approved dimmers include Lutron Diva AVTV, Lutron Nova NFTV and NTFTV.

LifeShield is provided with all configurations for added protection in the event of abnormally excessive high ambient temperature conditions.

**CONTROLS** - MTR can be equipped with photocell adapter, egress adapter, or sensor control programmable, which is not intended for use with additional photo-control, wireless control or dimming systems.

**FINISH** - Luminaire finish consist of a five stage pretreatment regimen with a polymer primer sealer, oven dry off, and top coated with a thermoset super TGIC polyester powder coat finish. The MTR meets the AAMA 605.2 performance specification which includes passing a 3000 hour salt spray test for corrosion resistance.

**MOUNTING** - The cast arm is contoured to fit a four or five inch diameter pole. The wall mounting plate is cast aluminum and fully gasketed and requires mounting hardware by others.

**CERTIFICATION** - Luminaire is listed with ETL for outdoor, wet location use, UL1598, UL 8750 and Canadian CSA Std. C22.2 no.250.

Approved By: \_\_\_\_\_ Project Name: \_\_\_\_\_

Location: \_\_\_\_\_ Date: \_\_\_\_\_

1919 Windsor Place ■ Fort Worth, TX 76110 ■ 800.633.8711 ■ Fax: 817.735.4824 ■ [www.wslighting.com](http://www.wslighting.com)

**WLS LIGHTING SYSTEMS**

Consider the Impact!

# MRTM SERIES

## LED WALL MOUNT

### ORDERING INFORMATION

| SERIES      | MOUNTING  | DISTRIBUTION   | # OF LED'S          | COLOR TEMP  | LINE DRIVER  | LUMINAIRE FINISH  | OPTIONS  |
|-------------|---|--|---------------------|---|--|---|--|
| <b>MTRM</b> | <b>P</b> - Pole mount, Specify 4" DIA, 5" DIA, or Square pole<br><b>PXA</b> - Pole with extended arm<br><b>WU</b> - Wall mounted uplight<br><b>WD</b> - Wall mounted downlight<br><b>DXA</b> - Wall mounted downlight with extended arm | <b>T2</b> - Type II<br><b>T3</b> - Type III<br><b>T4</b> - Type IV<br><b>T5</b> - Type V<br><b>TR</b> - Type R, Right<br><b>TL</b> - Type IL, Left | <b>32</b> - 32 LEDs | <b>3K</b> - 4000K<br><b>4K</b> - 4000K<br><b>4K</b> - 5000K | <b>400</b> - 400mA Driver<br><b>700</b> - 700mA Driver | <b>WH</b> - Artic White<br><b>BL</b> - Black<br><b>MBL</b> - Matte Black<br><b>DB</b> - Dark Bronze<br><b>DGN</b> - Dark Green<br><b>TT</b> - Titanium<br><b>WDB</b> - Weathered Bronze<br><b>MDB</b> - Bronze Metallic<br><b>VBU</b> - Verde Blue<br><b>CRT</b> - Corten<br><b>MAL</b> - Matte Aluminum<br><b>MG</b> - Medium Grey<br><b>AGN</b> - Antique Green<br><b>LG</b> - Light Grey<br><b>RAL</b> - Premium Color<br><b>CC</b> - Custom Color, Contac WLS | <b>HSS</b> - House Side shield, T4 only.<br><b>LDL</b> - Lightly Diffused Lens<br><b>CLR</b> - Clear flat glass secondary lens, Not for MRT-MWU<br><br><b>CONTROLS</b><br><br><b>SCP</b> - Sensor Control Programmable, pole accessory is available to provide occupancy detection for outdoor applications meeting California Title 24. |

**MRTM**  
(EXAMPLE ORDER)

**WU**

**T3**

**32**

**3K**

**700**

**DB**

**N/A**

### ORDER: WLS-MRTM

#### LUMINAIRE PERFORMANCE

| Optical System | Secondary Lens or Shield | Distribution | Light Engine    | Ordering Code    |                 |   |   |                  |      |                 |   |                  |    |      |                 | Drive Current (ma) | System Watts |   |     |    |
|----------------|--------------------------|--------------|-----------------|------------------|-----------------|---|---|------------------|------|-----------------|---|------------------|----|------|-----------------|--------------------|--------------|---|-----|----|
|                |                          |              |                 | Delivered Lumens | 3K              |   |   | Delivered Lumens | 4K   |                 |   | Delivered Lumens | 5K |      |                 |                    |              |   |     |    |
|                |                          |              |                 |                  | Efficacy (lm/w) | B | U |                  | G    | Efficacy (lm/w) | B |                  | U  | G    | Efficacy (lm/w) |                    |              | B | U   | G  |
| MicroCore      | No Lens (Standard)       | TYPE 2       | T2-32LED        | 4934             | 66              | 1 | 0 | 1                | 6202 | 83              | 2 | 0                | 2  | 6668 | 89              | 2                  | 0            | 2 | 700 | 75 |
|                |                          | TYPE 3       | T3-32LED        | 4901             | 65              | 1 | 0 | 1                | 6159 | 82              | 2 | 0                | 2  | 6623 | 88              | 2                  | 0            | 2 |     |    |
|                |                          | TYPE 4       | T4-32LED        | 4937             | 66              | 1 | 0 | 2                | 6256 | 83              | 1 | 0                | 2  | 6701 | 89              | 1                  | 0            | 2 |     |    |
|                |                          | TYPE 5       | T5-32LED        | 4977             | 66              | 3 | 0 | 1                | 6254 | 83              | 3 | 0                | 1  | 6725 | 90              | 3                  | 0            | 1 |     |    |
|                |                          | 45° LEFT     | TL-32LED        | 5023             | 67              | 1 | 0 | 2                | 6014 | 80              | 1 | 0                | 2  | 6609 | 88              | 1                  | 0            | 2 |     |    |
|                |                          | 45° RIGHT    | TR-32LED        | 5023             | 67              | 1 | 0 | 2                | 6014 | 80              | 1 | 0                | 2  | 6609 | 88              | 1                  | 0            | 2 |     |    |
|                | House Side Shield        | TYPE 4       | T4-32LED-...HSS | 3724             | 50              | 0 | 0 | 2                | 4459 | 59              | 0 | 0                | 2  | 4900 | 65              | 0                  | 0            | 2 | 450 | 49 |
|                | No Lens (Standard)       | TYPE 2       | T2-32LED        | 3158             | 64              | 1 | 0 | 1                | 3969 | 81              | 1 | 0                | 1  | 4268 | 87              | 1                  | 0            | 1 |     |    |
|                |                          | TYPE 3       | T3-32LED        | 3136             | 64              | 1 | 0 | 1                | 3942 | 80              | 1 | 0                | 1  | 4238 | 86              | 1                  | 0            | 1 |     |    |
|                |                          | TYPE 4       | T4-32LED        | 3160             | 64              | 0 | 0 | 1                | 4004 | 82              | 0 | 0                | 1  | 4289 | 88              | 0                  | 0            | 1 |     |    |
|                |                          | TYPE 5       | T5-32LED        | 3185             | 65              | 2 | 0 | 1                | 4002 | 82              | 2 | 0                | 1  | 4304 | 88              | 2                  | 0            | 1 |     |    |
|                |                          | 45° LEFT     | TL-32LED        | 3215             | 66              | 0 | 0 | 1                | 3849 | 79              | 1 | 0                | 1  | 4230 | 86              | 1                  | 0            | 2 |     |    |
|                |                          | 45° RIGHT    | TR-32LED        | 3215             | 66              | 0 | 0 | 1                | 3849 | 79              | 1 | 0                | 1  | 4230 | 86              | 1                  | 0            | 2 |     |    |
|                | House Side Shield        | TYPE 4       | T4-32LED-...HSS | 2383             | 49              | 0 | 0 | 1                | 2854 | 58              | 0 | 0                | 1  | 3136 | 64              | 0                  | 0            | 1 |     |    |

#### ELECTRICAL CHARACTERISTICS

| Optical System | Ordering Code |     | Driver       |              |              |      |         |     |                   |                | Dimming               |               |   |         |        |   |         |     |
|----------------|---------------|-----|--------------|--------------|--------------|------|---------|-----|-------------------|----------------|-----------------------|---------------|---|---------|--------|---|---------|-----|
|                |               |     | LED Drive mA | System Watts | Line Voltage |      | Amps AC |     | Min. Power Factor | Max THD (%)    | Operating Temp. Range | Dimming Range | Source current out of 0-10V purple wire |         |        | Absolute voltage range on 0-10V (+) purple wire |         |     |
|                |               |     |              |              | VAC          | HZ   | 120     | 277 |                   |                |                       |               | Min                                     | Typical | Max    | Min   | Typical | Max |
| MicroCore      | 32LED         | 700 | 75           | 120-277      | 50/60        | 0.63 | 0.27    | ≥9  | 20                | -30°C TO +40°C | 10% TO 100%           | 0 MA          | -                                       | 4 mA    | -2.0 V | -   | +15 V   |     |
|                |               | 450 | 49           |              |              | 0.41 | 0.18    |     |                   |                |                       |               |   |         |        |   |         |     |

Approved By: \_\_\_\_\_ Project Name: \_\_\_\_\_

Location: \_\_\_\_\_ Date: \_\_\_\_\_

**WLS** LIGHTING SYSTEMS

1919 Windsor Place ■ Fort Worth, TX 76110 ■ 800.633.8711 ■ Fax: 817.735.4824 ■ [www.wslighting.com](http://www.wslighting.com)

Consider the Impact!